



# Climate Action Strategy

2020-2040

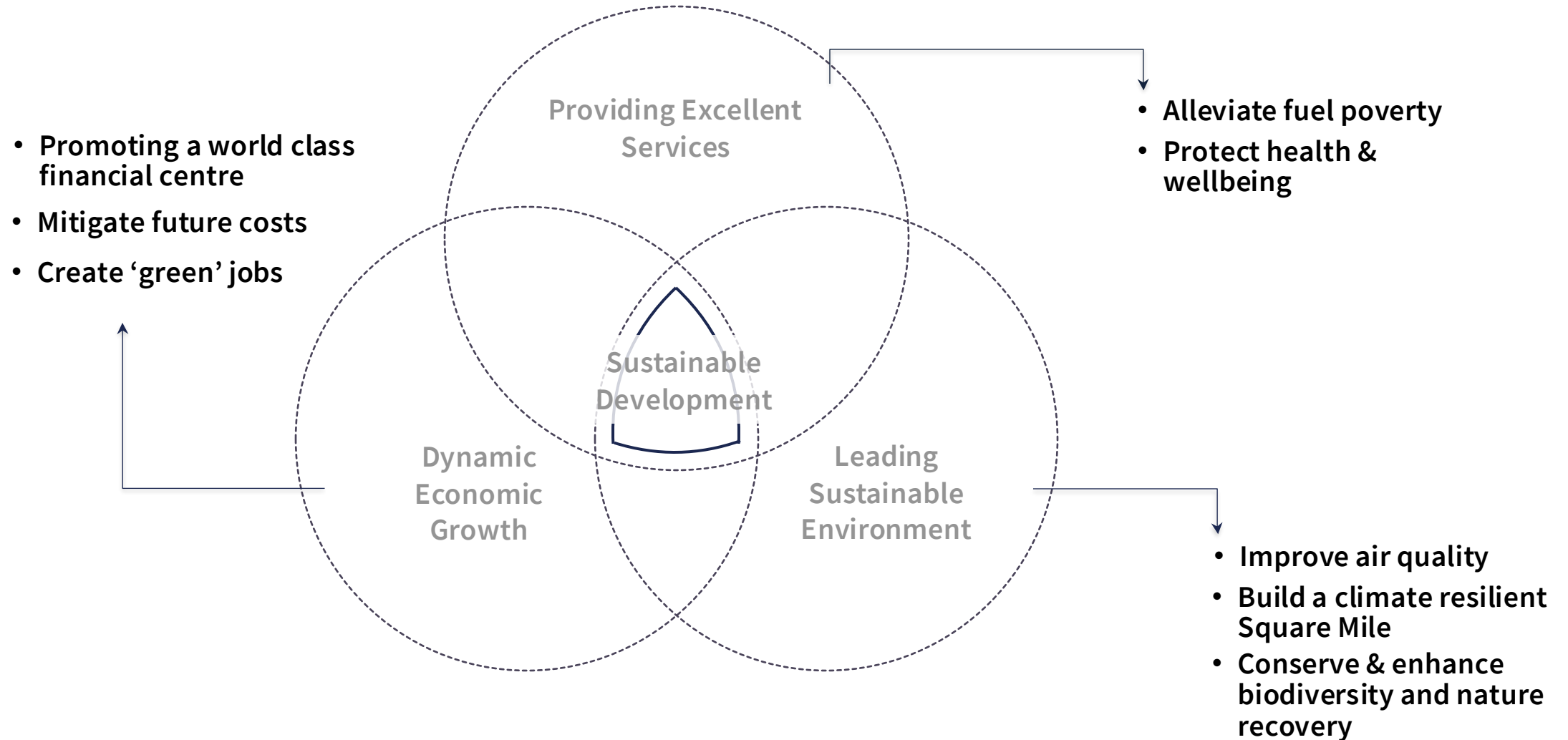
Natural Environment Board

February 2025

# Agenda

- ① A brief introduction to our Climate Action Strategy
- ② Our approach
- ③ Projects under this Committee
- ④ Our progress
- ⑤ Q&A

# Climate Action contributes to the City Corporation's aims



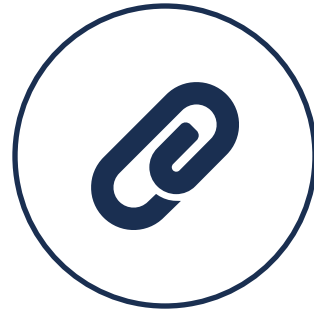
# The City Corporation has committed to achieving...

Four objectives



**Net zero by 2027**

in the City Corporation's  
operations



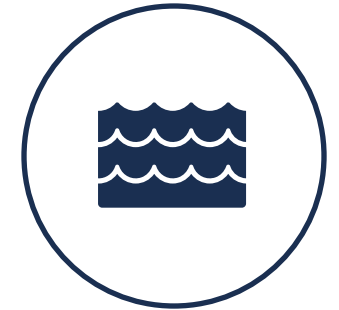
**Net zero by 2040**

across the City Corporation's  
full value chain



**Net zero by 2040**

in the Square Mile



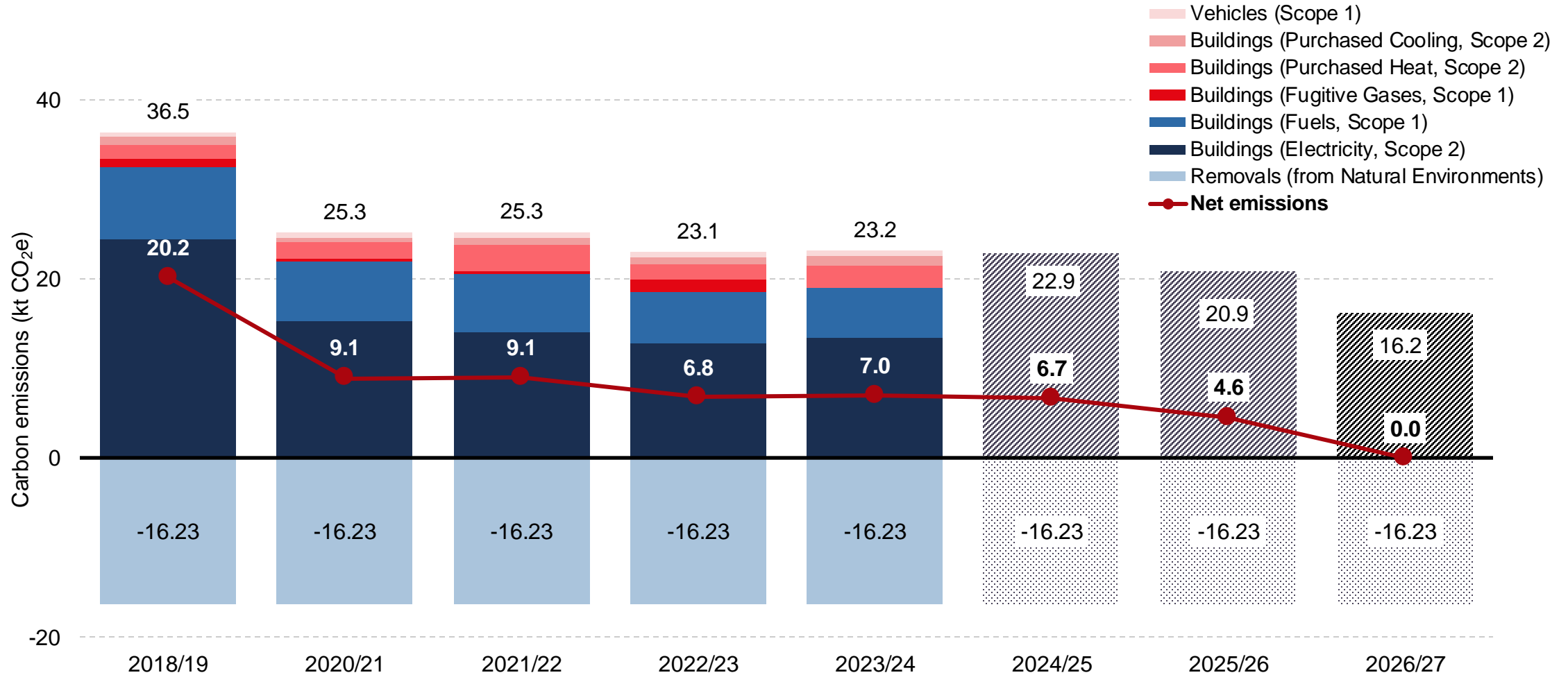
**Climate Resilience**

Climate resilience in our  
buildings, public spaces and  
infrastructure

# Net zero in our own operations by 2027

Our operational estate and vehicle fleet emissions (Scopes 1 & 2) is in progress to meet net zero by 2027

Status:  
In progress



# CAS Projects

13 projects delivered by local teams, managed as a central Programme




### Net zero by 2027

-  Operational Property & Housing (landlord areas)
-  Carbon Removals

### Net zero by 2040 (CoLC)

-  Capital Projects (Design Standards)
-  Investment Property
-  Purchased Goods & Services
-  Financial Investments

### Net zero by 2040 (Square Mile)

-  Square Mile
-  Heart of the City (SME Engagement)
-  Transport

### Climate Resilience

-  Building Resilience
-  Cool Streets & Greening
-  Mainstreaming Resilience

 Strategic Implementation Support

# Carbon Removals

City Corporation green spaces sequester **16,230 tCO<sub>2</sub>e/year**. The Carbon Removals project aims to:

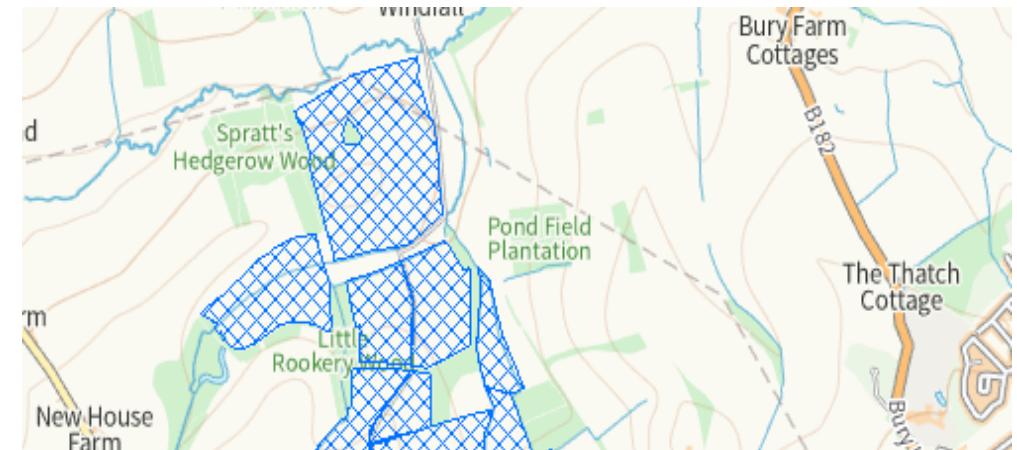
- **protect** existing sequestration from climate change,
- create 210 tCO<sub>2</sub>e **additional sequestration** before 2027
- increase biodiversity

## Key achievements so far

- Complex baseline assessed multiple times
- First 'spade in the ground' for CAS, creating Patmore's wildflower meadow
- Project rescope to account for effects of climate change
- Resourcing, upskilling and capacity building
- Copped Hall meadow planting (110 tCO<sub>2</sub>e/year)
- Deer management, fire protection measures

## What's next?

- Continue protection: deer management, drought and flood management, fire protection, squirrel surveys
- Continue Additionality: Copped Hall, Hampstead Heath, Wanstead Park, Queen's Park
- Measurement & monitoring



# Cool Streets & Greening

The City is forecast to experience hotter, drier summers and warmer, wetter winters. CSG aims to reduce the impact of this climate change through:

Developing, trialling and assessing **resilience measures**

Introducing **sustainable drainage**

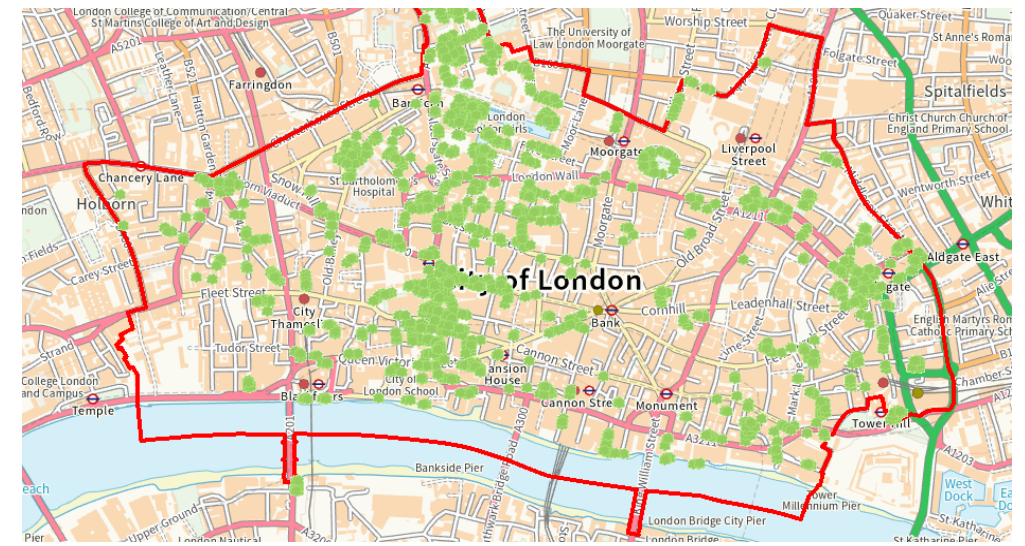
Creating new **green public space**

## Key achievements so far

- Cubic Mile project to map and plan for underground space in the City
- Over 30 resilience measures tested
- Greening implemented at 25 locations in the City
- Coordinated delivery across multiple teams for effective delivery at pace
- On street temperatures up to 6°C cooler under trees, compared to no trees

## What's next?

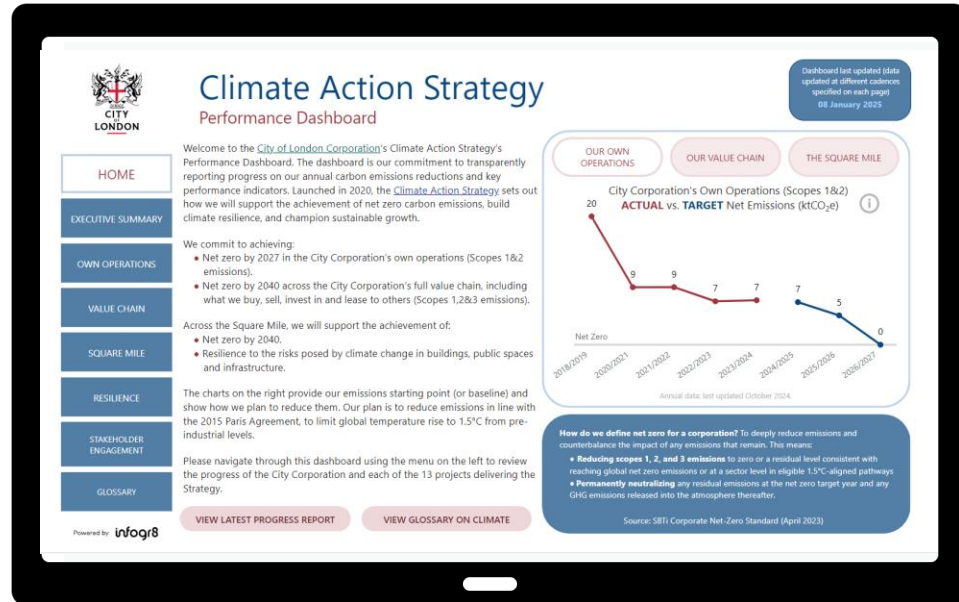
- At least 30 new street trees
- Completion of additional greening sites, including Finsbury Circus, Fann Street & St Peter Westcheap and Lloyds Avenue





# Progress reporting & transparency

We committed to regular progress reporting and performance tracking



Click here to open

**Our Climate Action Performance Dashboard**



Click here to open

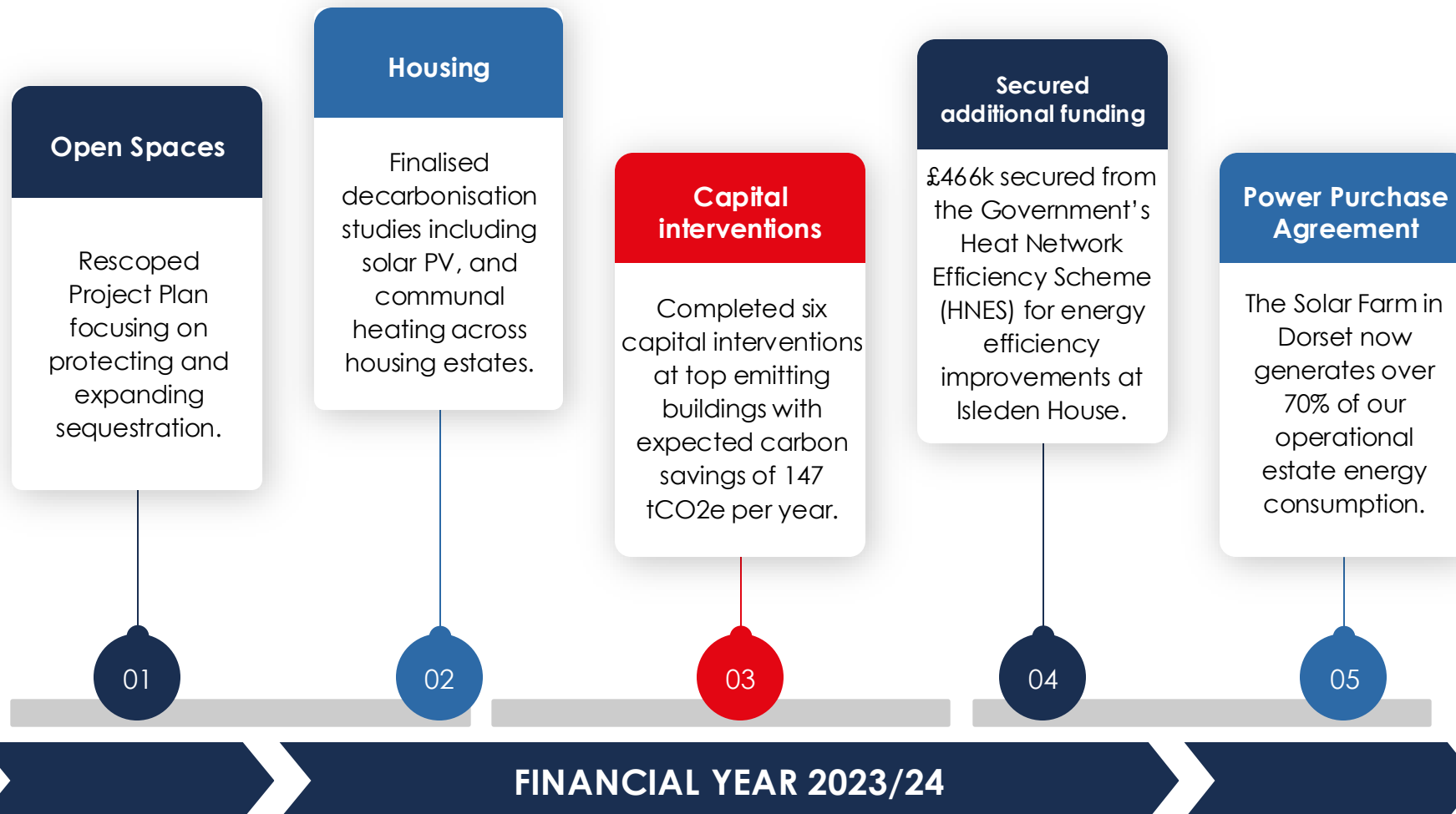
**Our Annual Progress Report (published Nov '24)**

# Questions?

# References

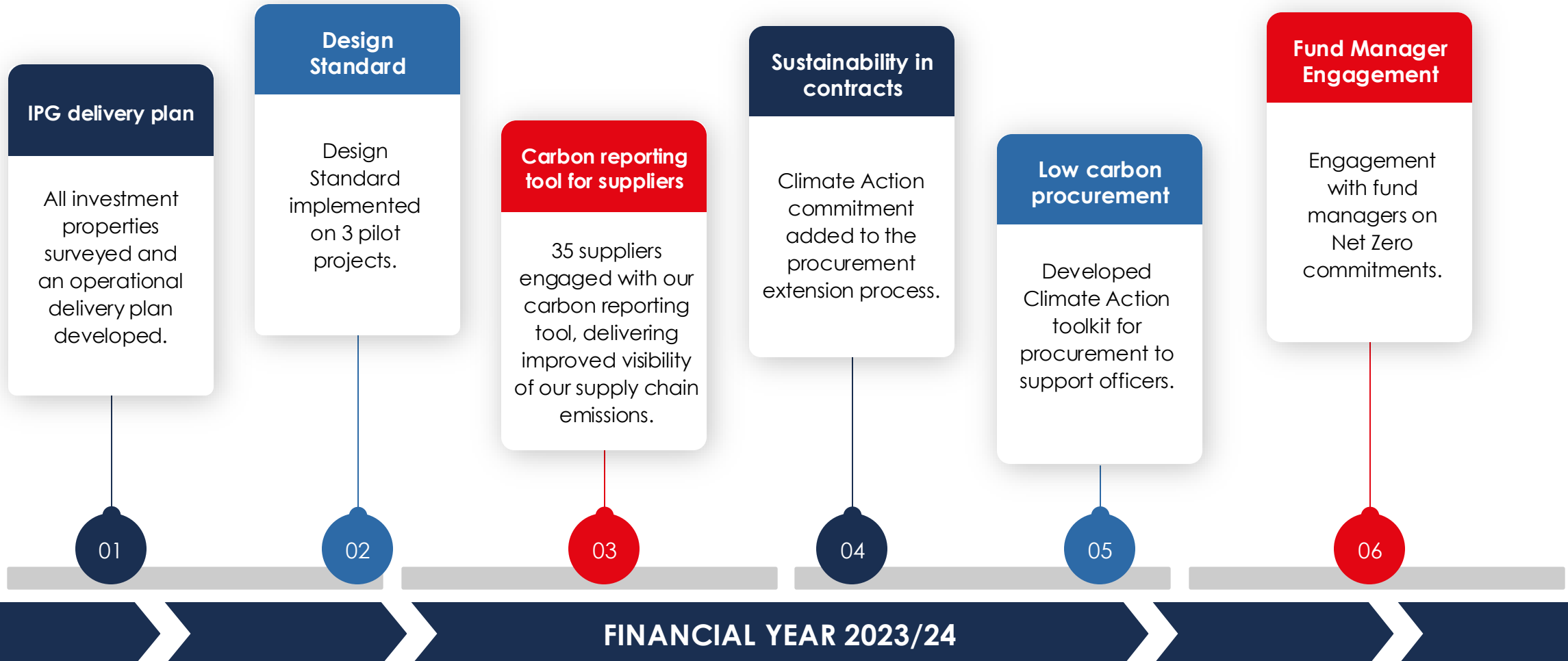
# Net zero in our own operations by 2027

Operational Buildings & Housing (Landlord Areas), Carbon Removals



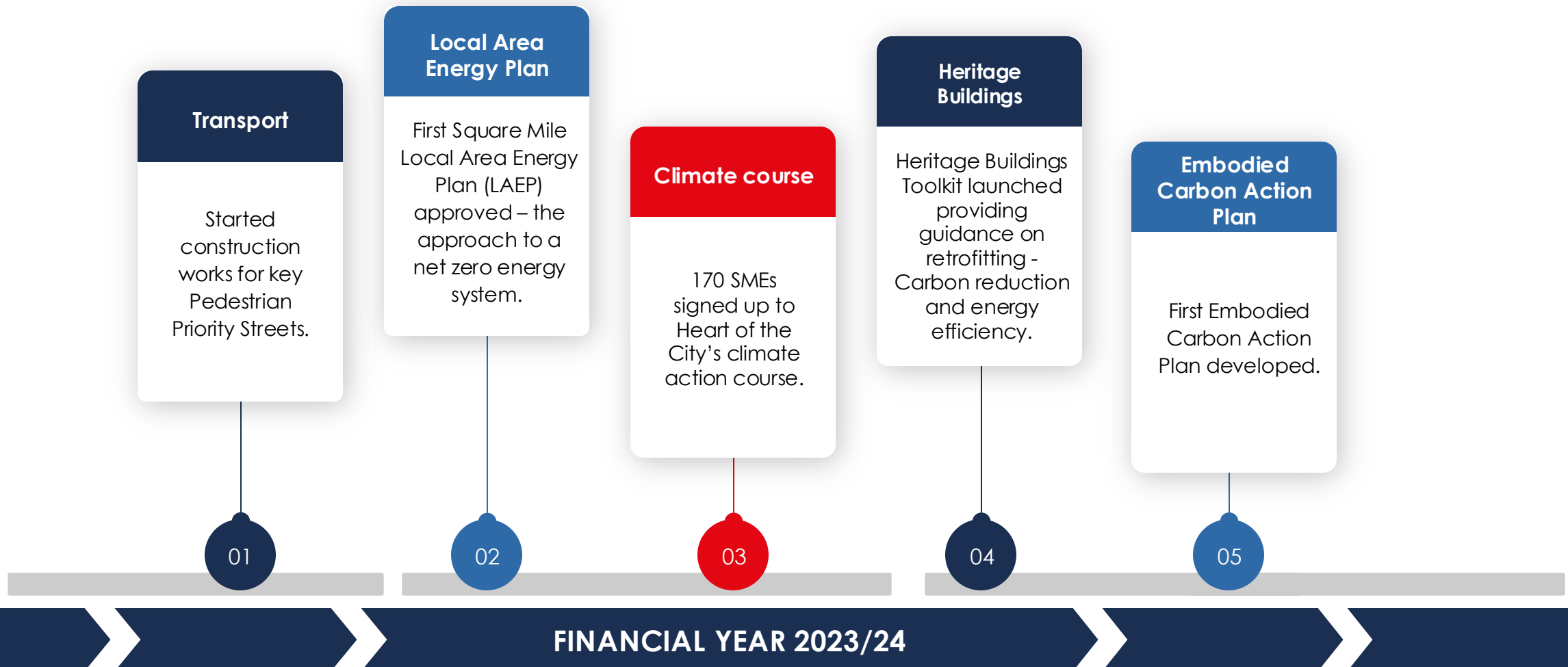
# Net zero in our value chain by 2040

Financial Investments, Investment Properties, Purchased Goods and Services, Design Standards



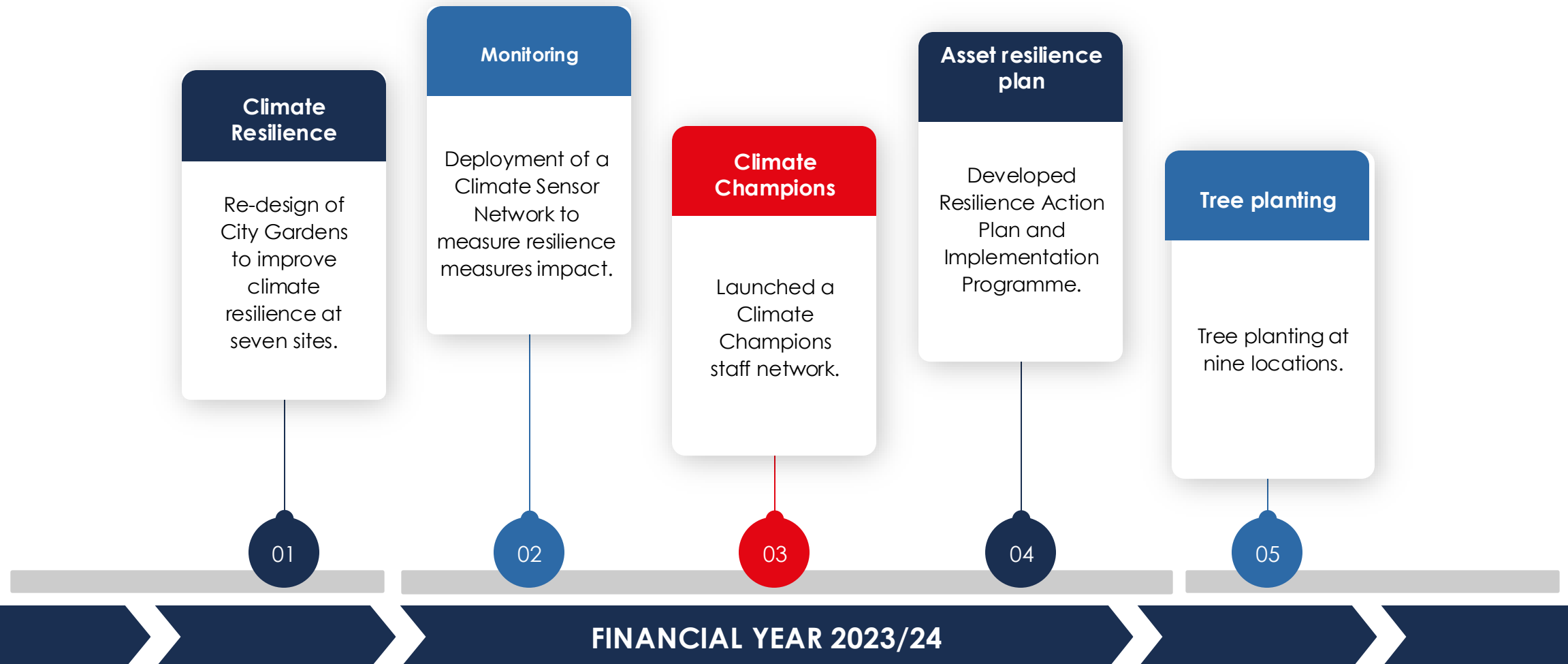
# Net zero in the Square Mile by 2040

Transport, Square Mile, Heart of the City



# A more resilient Square Mile

Cool Streets & Greening, Mainstreaming Climate Resilience, Resilient Buildings





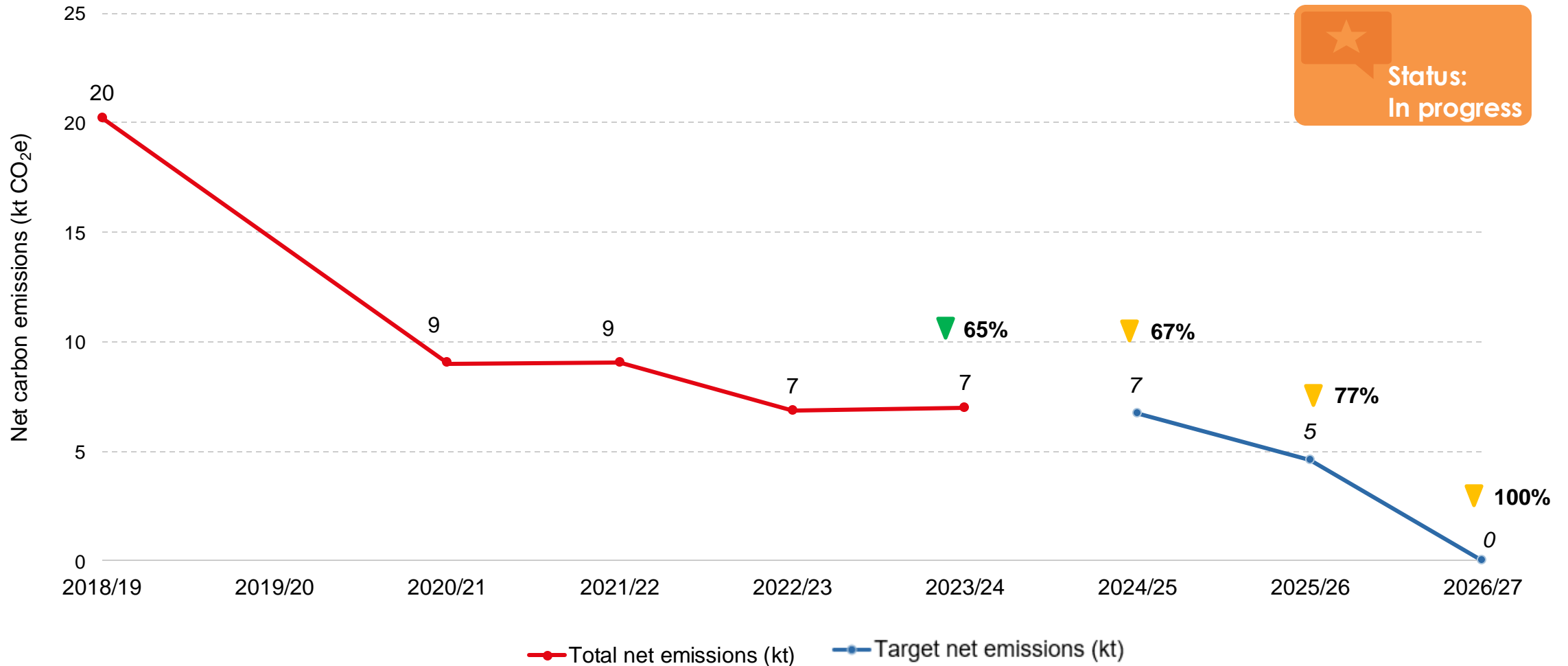
# Performance

How we're tracking against our  
targets



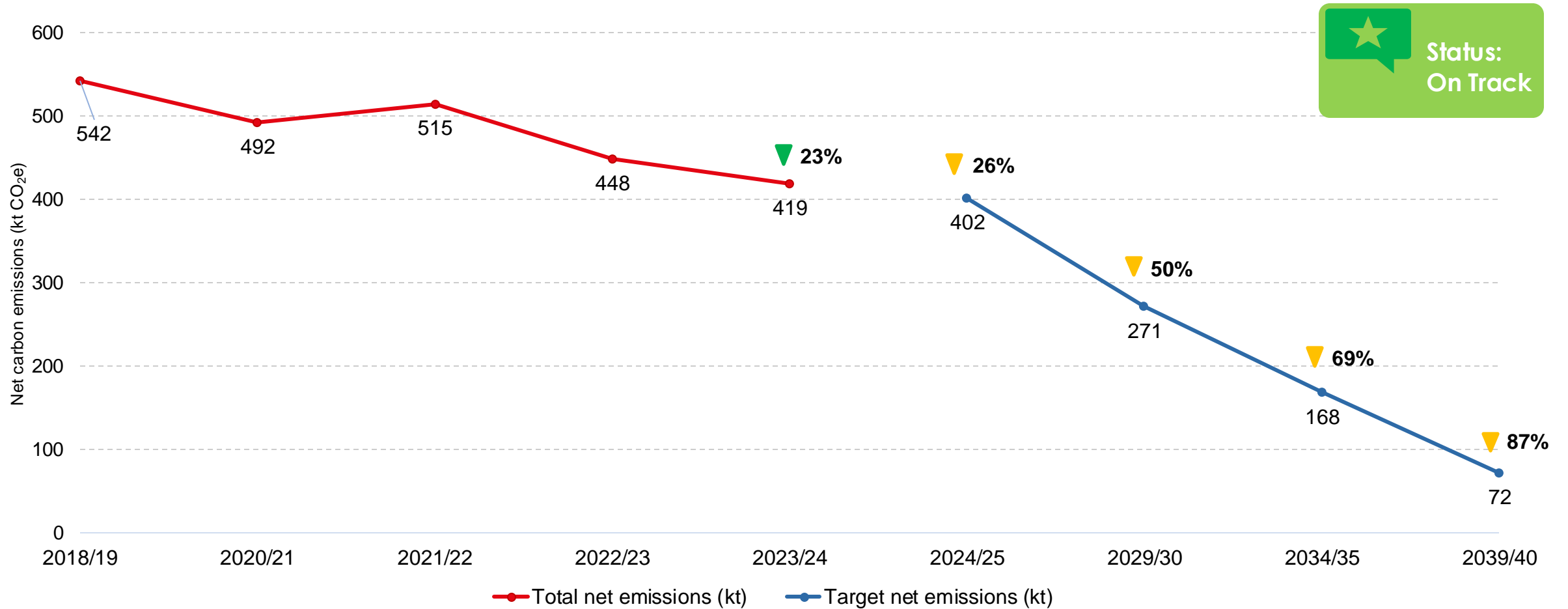
# Net zero in our own operations by 2027

Our operational estate and vehicle fleet emissions (Scopes 1 & 2) is in progress to meet net zero by 2027



# Net zero across the CoLC's value chain by 2040

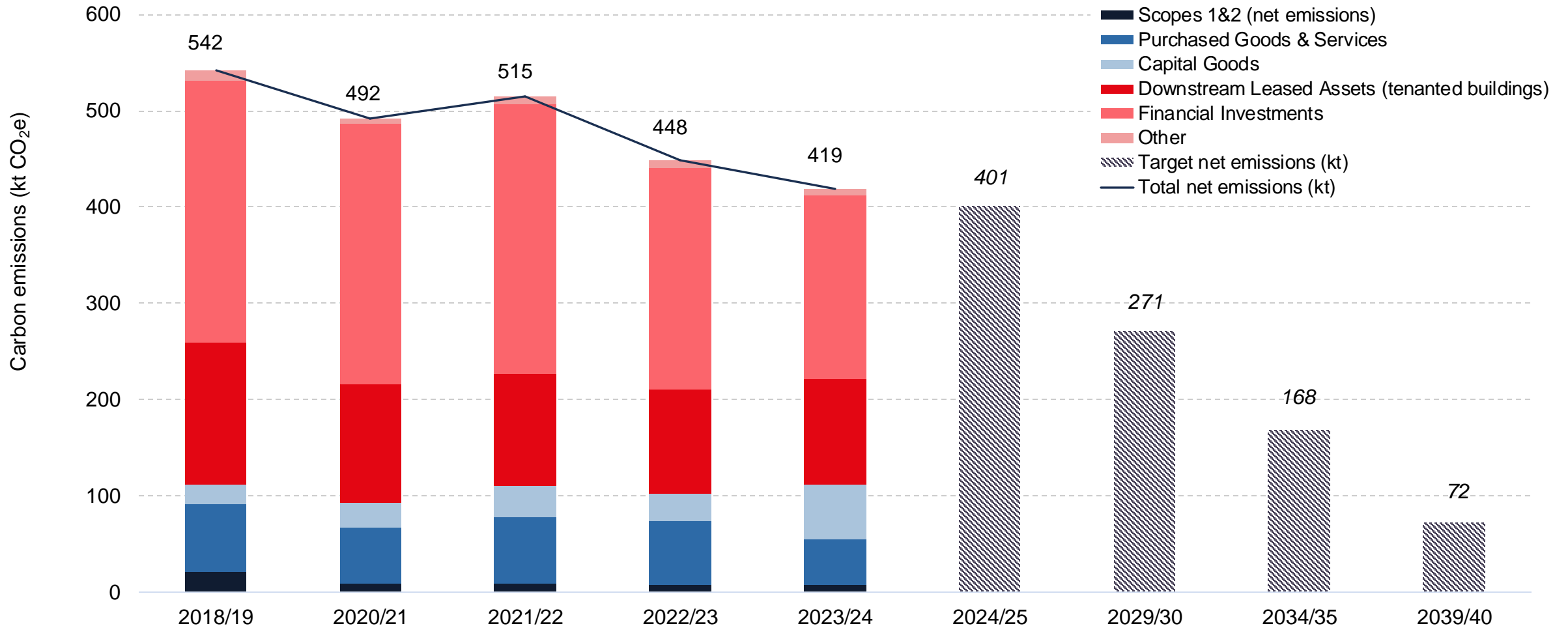
Our value chain emissions, all we buy, sell and invest in (Scopes 1, 2 and 3) is on track to meet net zero by 2040



# Net zero across the CoLC's value chain by 2040

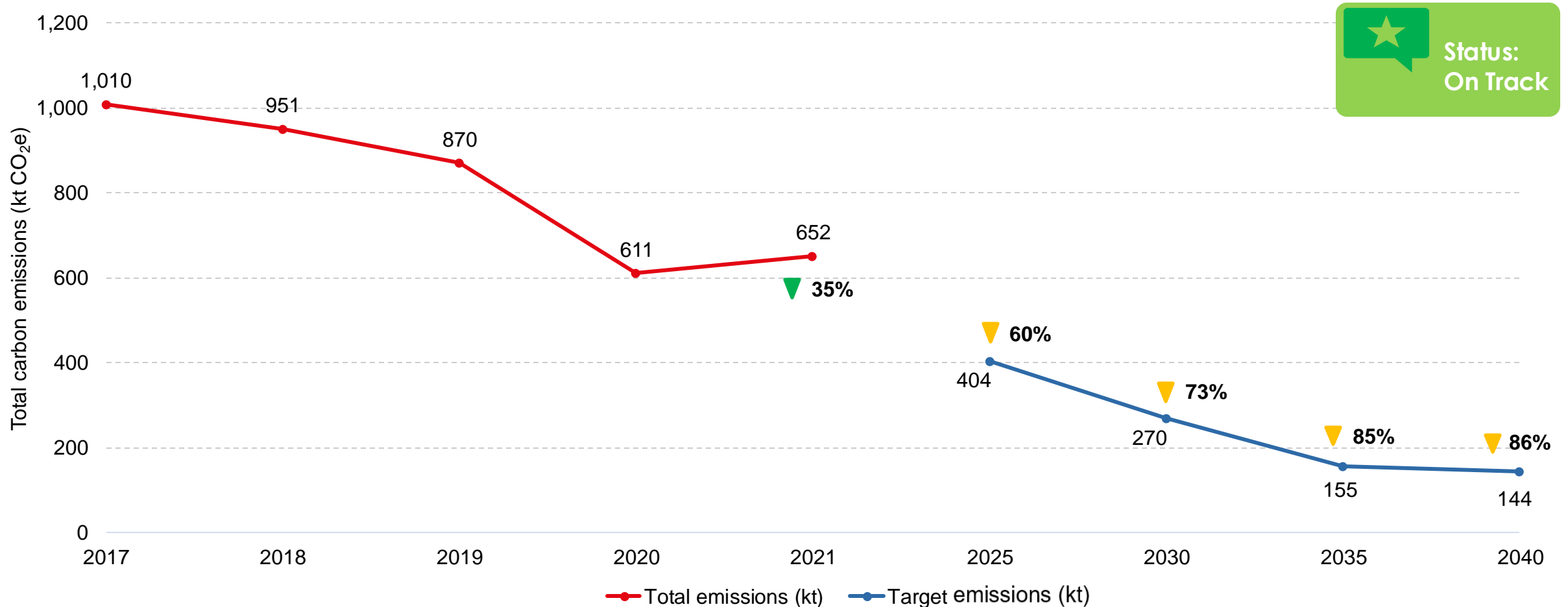


Our value chain emissions, all we buy, sell and invest in (Scopes 1, 2 and 3) is on track to meet net zero by 2040



# Support net zero across the Square Mile by 2040

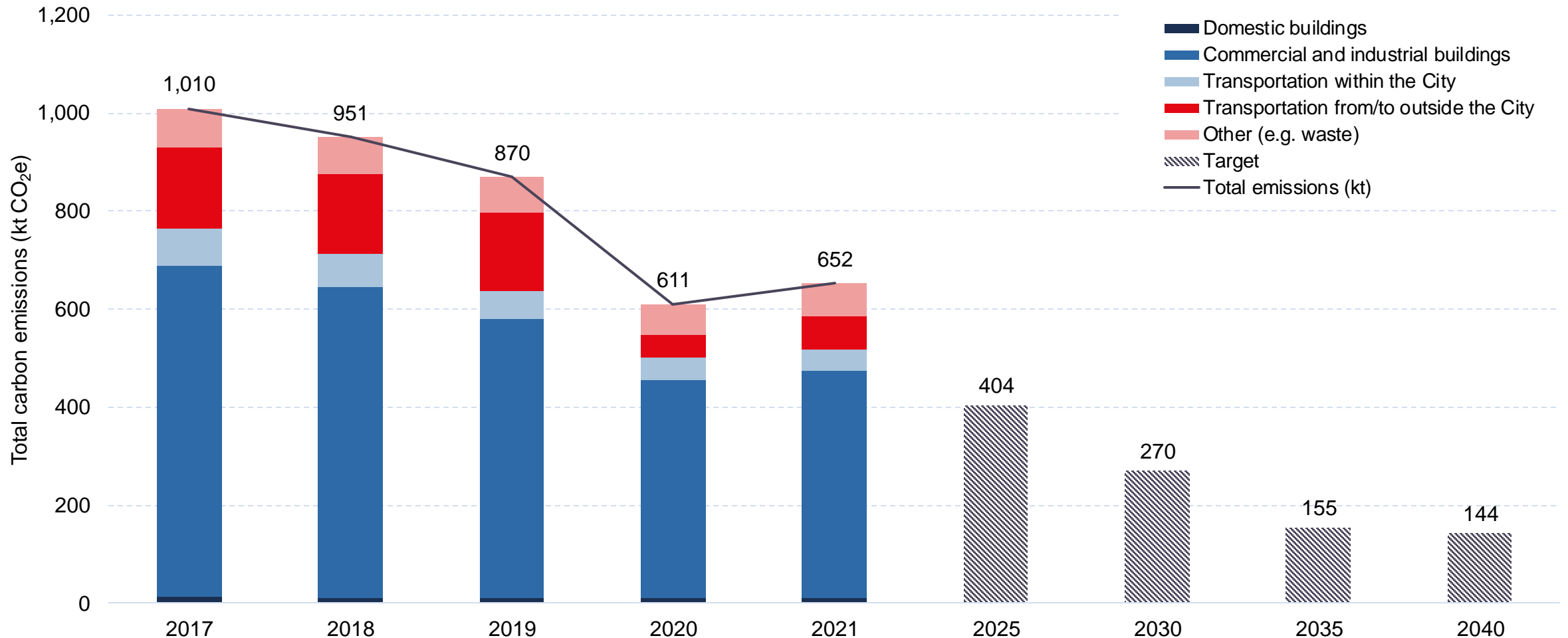
The Square Mile is on track to reach net zero by 2040



# Support net zero across the Square Mile by 2040



The Square Mile is on track to reach net zero by 2040



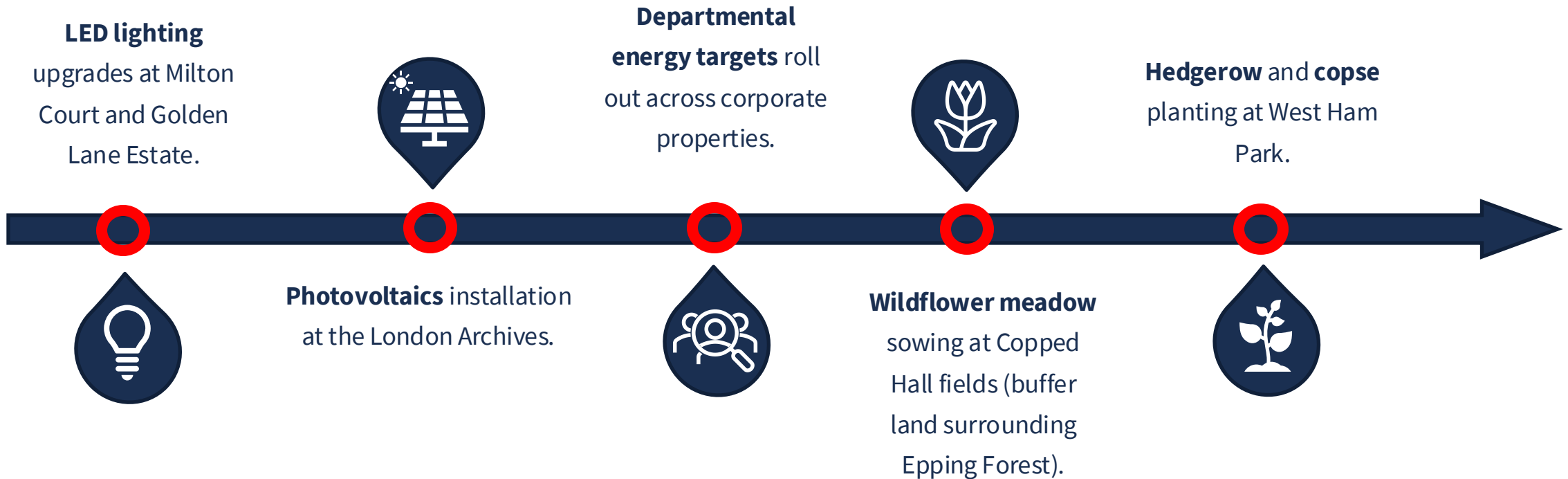


# Next steps

Where we go from here

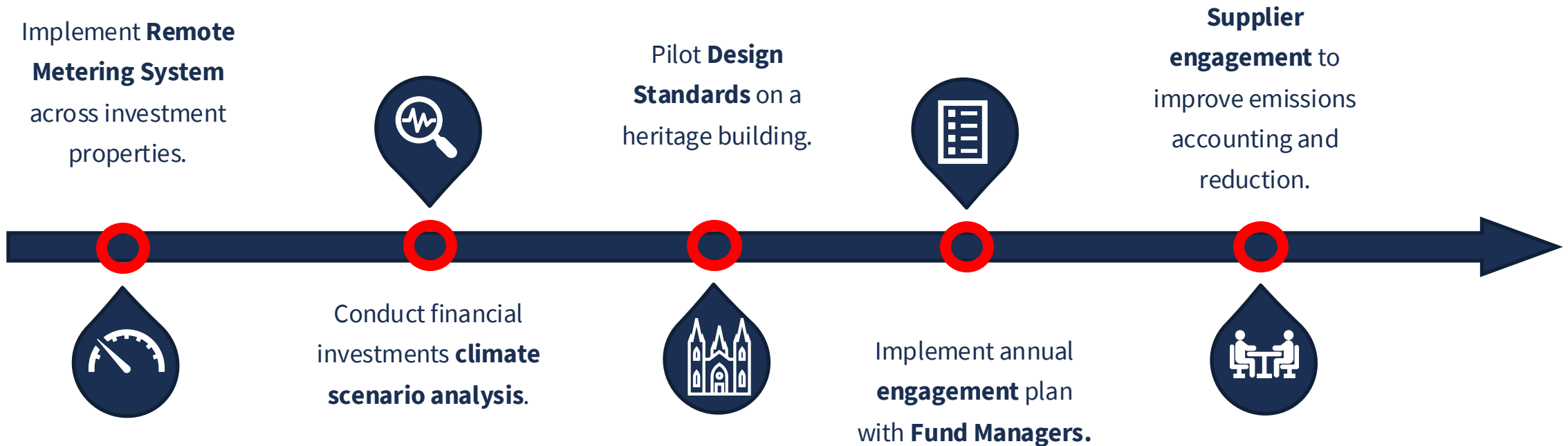
# Net zero in our own operations by 2027

Year 4 delivery: Operational Buildings and Housing (Landlord Areas), Carbon Removals



# Net zero in our value chain by 2040

Year 4 delivery: Financial Investments, Investment Properties, Purchased Goods and Services, Design Standards





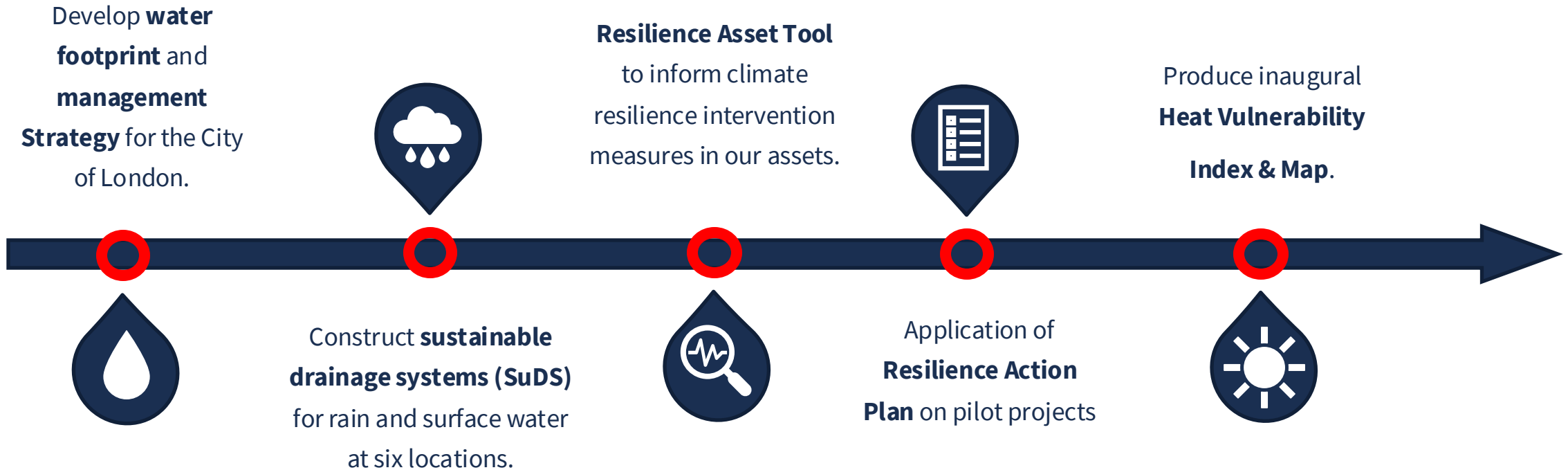
# Net zero in the Square Mile by 2040

Year 4 delivery: Transport, Square Mile, Heart of the City



# A more resilient Square Mile

Year 4 delivery: Cool Streets & Greening, Mainstreaming Climate Resilience, Resilient Buildings



# What can you do?

In support of the Climate Action Strategy



Promote our Climate Action Dashboard and Progress Report



Scrutinise reports and decisions in committee to consider climate action



Promote our Heritage Building Retrofit Toolkit in your ward



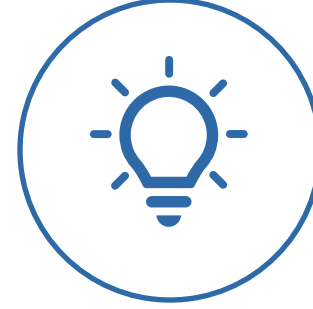
Encourage businesses to develop net zero plans



Promote Heart of the City's Climate Action Toolkit for SMEs



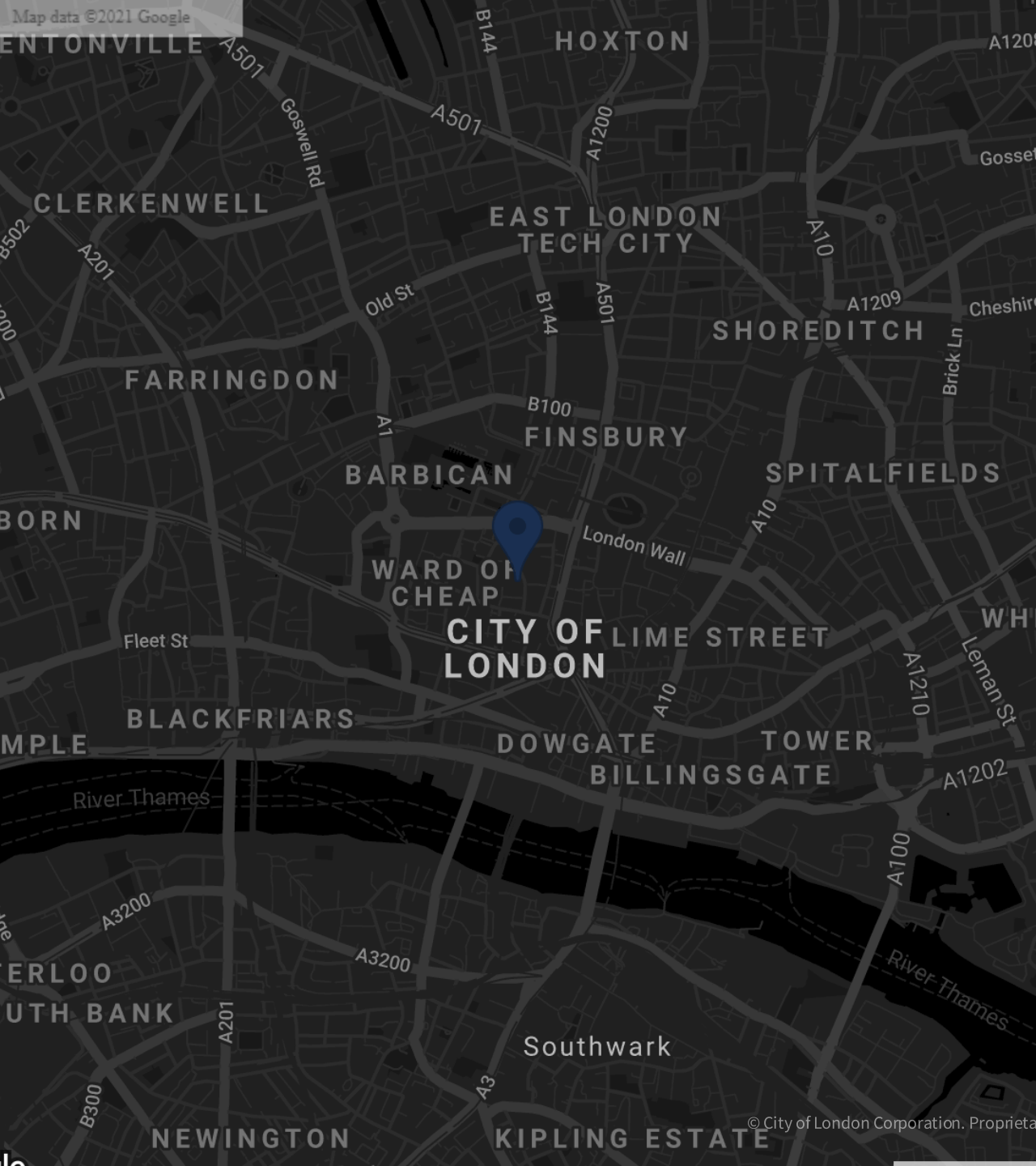
Invite businesses to sign up to Clean City Award Scheme



Refer residents to our SHINE service for energy support






Get involved in your ward's climate action initiatives



# Resources

## Links and Resources

-  Our intranet pages contain useful signposting to learning materials, technical guidance and updates: <https://corpoflondon.sharepoint.com/sites/Intranet/SitePages/New-Climate-Action-Strategy.aspx>
-  Our website: <https://www.cityoflondon.gov.uk/services/environmental-health/climate-action>
-  Climate Action Dashboard:



# Glossary

## Scopes 1 & 2 Emissions

<i><b>Emissions Category</b></i>	<i><b>Definition</b></i>
S1 Buildings Fuel Consumption	Combustion of fuel
S1 Vehicles	Combustion of fuel
S1 Fugitive emissions	Emissions from refrigeration and air conditioning leakages over operational life and disposal
S1 Process emissions	Industrial processes that chemically or physically transform materials
S2 Purchased electricity	Grid supplied energy
S2 Purchased heat	Grid supplied energy
S2 Purchased cooling	Grid supplied energy
S2 Purchased steam	Grid supplied energy

## Scope 3 Emissions

<i><b>Emissions Category</b></i>	<i><b>Definition</b></i>
1b. Purchased goods and services	Extraction, production and transportation of goods and services purchased or acquired
2. Capital goods	Extraction, production, and transportation of capital goods purchased or acquired
3. Fuel and energy related activities	Extraction, production, and transportation of fuels and energy purchased or acquired (not accounted in Scope 1 or 2)
5a. Waste generated in operations	Disposal and treatment of waste generated by the reporting company but not owned or controlled by the company
5b. Water	Disposal and treatment of wastewater generated by the reporting company but not owned or controlled by the company
6. Business travel	Transportation of employees for business-related activities
7. Employee commuting	Transportation of employees between their homes and their worksites
13. Downstream leased assets	Operation of assets owned and leased
15. Investments	Operation of investments (including equity and debt investments and project finance)

# Glossary

## BASIC+ Emissions Categories

<i><b>Emissions Category</b></i>	<i><b>Definition</b></i>
S1 Stationary Domestic	Combustion of fuel
S1 Stationary Commercial and industrial	Combustion of fuel
S1 Transportation On-road	Combustion of fuel
S1 Transportation Railways	Combustion of fuel
S1 Transportation Aviation and shipping	Combustion of fuel
S1 Transportation Off-road machinery	Combustion of fuel
S2 Stationary Domestic	Grid supplied energy
S2 Stationary Commercial and industrial	Grid supplied energy
S2 Transportation On-road (electric)	Grid supplied energy
S2 Transportation Railways (electric)	Grid supplied energy
S3 Transportation	Transportation of employees for business-related activities/Transportation of employees between their homes and their worksites
S3 Energy	Electricity transmission and distribution losses
S3 Waste	Disposal and treatment of waste generated by the reporting company but not owned or controlled by the company
S3 Wastewater	Disposal and treatment of wastewater generated by the reporting company but not owned or controlled by the company